

Fruitquality- measurement

FTAnalyser GS-15 / GS-25



Umweltanalytische
Produkte GmbH

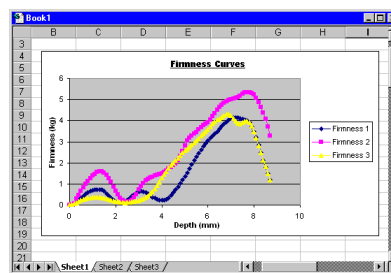
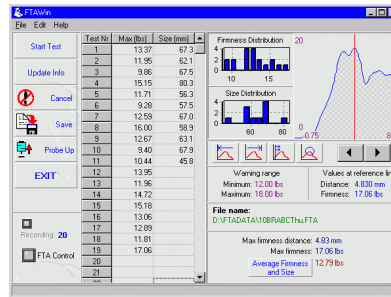
Hardware:



The FTA (= Fruit Texture Analyser) has the following features:

- ▶ Tests your apples, pears, plums, peaches, nectarines and kiwi fruit automatically for firmness and does advanced texture analysis.
- ▶ It's quick, easy to use and very reliable.
- ▶ Accurate probe speed
- ▶ Accurate test distance (depth)
- ▶ Can also measure fruit size.
- ▶ RS-232 interface for PC-connection, Windows-Software for evaluation
- ▶ Software Development Kit available for your own Software application.
- ▶ Runs with **ART-Soft-Database!**
- ▶ The machine is maintenance free, requiring only regular cleaning.

Software:



Measurement/Evaluation

Firmness graph

System requirements:

- ▶ CPU 486DX or higher
- ▶ 8MB RAM or more
- ▶ Windows 95/98/NT
- ▶ SVGA (800x600dpi)
- ▶ CD-ROM drive
- ▶ Serial port (DB9)

Options:



- ▶ LCD/Keypad, which allows you to work without a PC (Art.Nr. 26700a)



- ▶ EFM (electronic fruit size measurement) to measure and record fruit sizes. (Art.Nr. 26700b)



- ▶ Balance to connect directly to FTA-System. (ArtNr. 26700c)

	GS-15	GS-25
Non-repeatability	0,5%	0,4%
Speed of probe	1..40 mm/sec	1..40mm/sec
Operating range	50g .. 15000g	50g .. 25000g
Maximum fruit size	120mm	120mm
Weight measure	Optional	Optional
Size measure (EFM)	Optional	Optional
LCD/Keypad-Attachment	Optional	Optional
Weight/Power-supply	9kg, 110/220Vac, 50/60Hz	9kg, 110/220Vac, 50/60Hz
Article number	26700	26702