



Fruitsoft 7.0 - THE first choice database for your laboratory quality-management!

Easy to use – easy to fit your requirements – export to MS-Excel.

Around production and marketing of fruit and vegetables a lot of measurements are carried out that create a lot of data. Our Fruitsoft-Database is the perfect tool to collect all this data for further evaluation and processing. We establish links to connected measurement devices (like FT7, FTA GS-15 etc) to automatically collect and store the measured values on your PC. Further Meta-Data (producer, supplier, customer, sort, variety, growth-area, date of harvest...) as well as further quality features (homogenous coloured, slightly damaged through hail etc) or data from pesticide-analytics can be added.

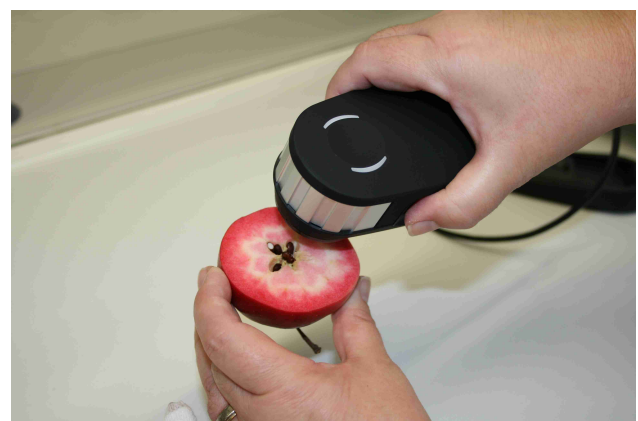
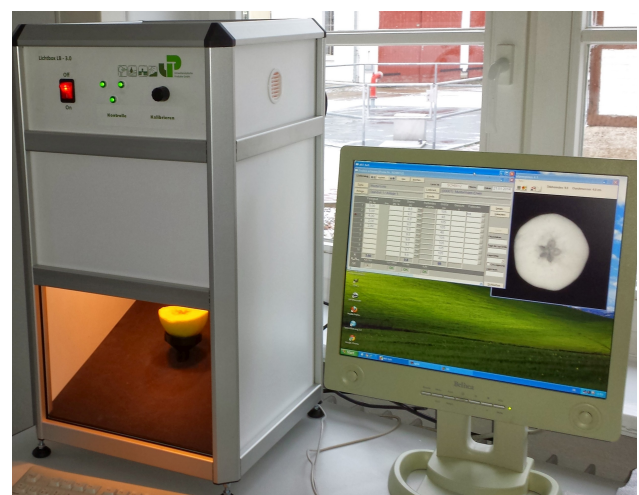
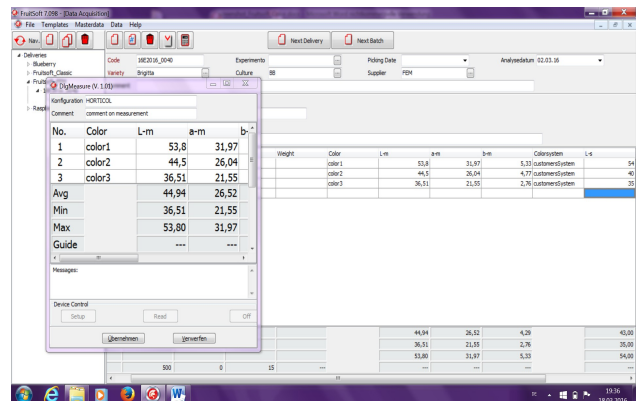
Within a few years a powerful tool for forecasting quality and yield grows up! It will even help to pay your suppliers by quality not only by quantity!

We will be pleased to configure the database to your requirements, to make sure, workflow and collected data are optimized. We will work out which devices are already available, and if they can be integrated. We can help with importing existing data and define individual protocols for storage, delivery, harvest-date forecasts etc.

Our approved measurement systems for apple-ripeness and Softfruit-Firmness make measurements quick and easy and allow the import of the values by just pressing a button.

System requirements:

– MS-Windows7 or higher



- Client-/Server-use from MS-Windows Server 2008 R2 on
- Firebird-Database-Server from V2.1